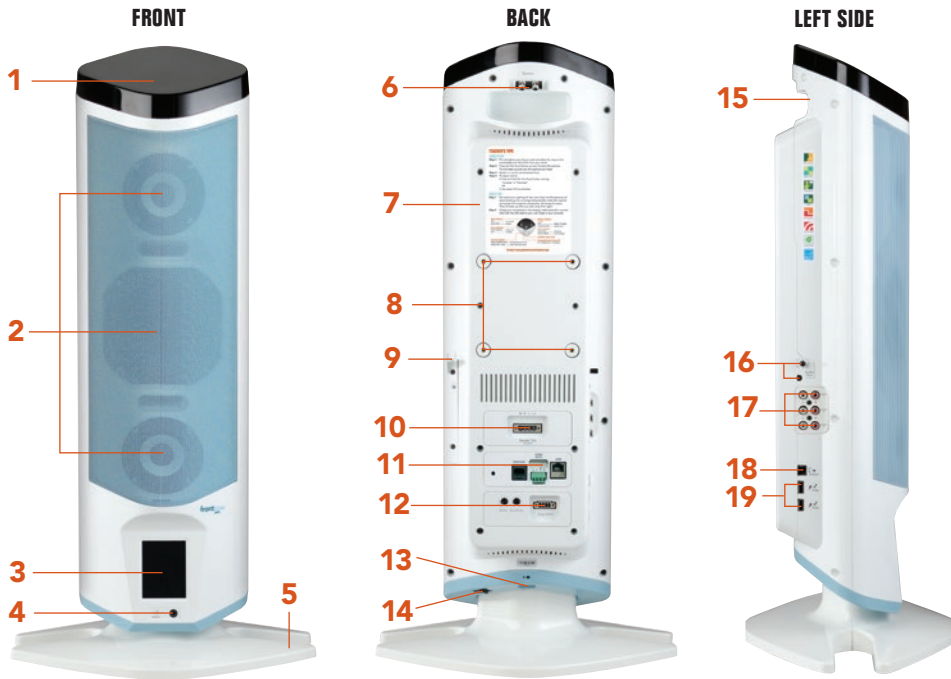


ITR-01 JUNO TOWER RECEIVER



SPECIFICATIONS

- Transmission type:** Infrared
- Receiving frequencies:** 2.1MHz, 2.4MHz; (2.8MHz, 3.3MHz, 3.6MHz with Channel Expansion Module)
- Frequency response:** 50Hz – 20kHz
- Signal-to-noise:** >70dB
- THD:** <1% @ 1kHz
- Maximum audio output power:** 40W, peak program
- Power supply:** 18VDC @ 3.3AMP
- Size (wxhxd):**
 - Tower without base:** 19.7 x 68.6 x 16.5cm/ 7.75 x 27 x 6.5in
 - Tower with base:** 35.6 x 71.8 x 26.7cm/ 14 x 28.25 x 10.5in
- Weight:**
 - Tower without base:** 5.7kg/12.5lbs
 - Tower with base:** 6.4kg/14lbs
- Operating range:** 18.3m/60ft, line of sight (typical)
- Reception area:** 274m²/900ft² (typical)

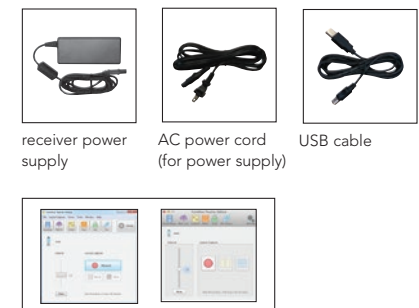
USER CONTROLS

- Power
- Master volume
- Microphone volume (5)
- Auxiliary audio volume (4)
- Audio out volume
- Tower settings

INPUTS/OUTPUTS

- Input power jack
- (2) RCA jacks for external sensor connection
- 3.5mm audio out jack
- (3) RCA stereo audio in jacks (with stereo sound output)
- (1) 3.5mm stereo audio in jack (with stereo sound output)
- (2) serial microphone charging/programming jacks
- (1) serial communications port

ITR-01 ACCESSORIES

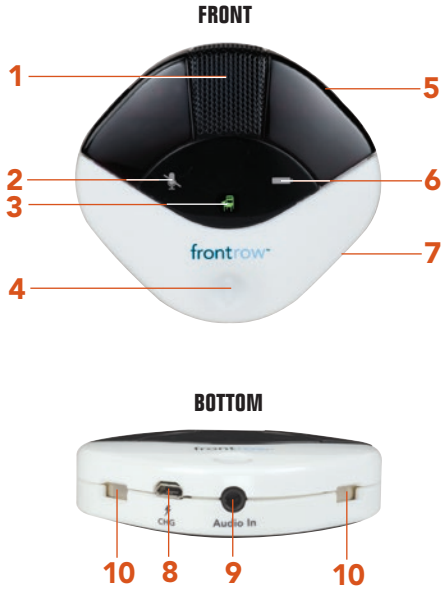


Teacher Edition Software
(Windows or Mac OS)

- 1 Integrated Sensor**
Integrated high sensitivity infrared diode array.
- 2 Digital, 3 Speaker 2.1 Array**
Two mid-range HF drivers and one woofer provide full, rich stereo sound.
- 3 LCD touch screen**
Lockable full-color touch screen control.
- 4 Stereo Quick Connect**
Easily and quickly connect an MP3 player or other audio device.
- 5 Table/desk Stand**
Sturdy desk stand is easily removed for wall mounting.
- 6 Additional Sensor Ports**
Two ports for additional sensors.
- 7 Channel Expansion Module Bay**
Add the optional Channel Expansion Module to use up to five microphones with the Juno Tower.
- 8 100mm VESA Wall Mount Screw Taps**
- 9 Transmitter/USB Cable Hook**
Hang your transmitters while charging from the tower. When not charging, the USB cable hangs from the center of the hook.
- 10 Speaker Expansion Module Bay**
Optional module for adding extra speakers for expanded audio coverage.
- 11 Juno Connect™ Module Bay**
Optional module for adding software and voice control of AV devices plus, in conjunction with Conductor, two-way communication between classroom and front office.
- 12 Page Override Module Bay**
The optional module mutes all audio whenever an announcement is made over the school's public address system.
- 13 Power Jack**
- 14 Power Switch**
- 15 Easy Grip Handle**
Integrated ergonomic handle makes carrying or moving the Juno Tower easy.
- 16 Auxiliary Output**
Output with volume control for capturing lectures or to connect personal FM systems.

- 17 Stereo Inputs for External Audio**
Connect other classroom A/V equipment such as a DVD player, television or VCR.
 - 18 Serial Port**
Using the included USB cable, connect to a computer running the FrontRow Desktop software application for remote control of the Juno Tower.
 - 19 Integrated Serial Hub**
Two ports for charging or programming microphones.
- Custom Naming**
Name is displayed on the LCD touch screen for easy identification.
- Feedback Suppression**
The next-generation Adapto™ digital engine actively scans audio 375 times per second to suppress feedback squeal before it starts.
- Optimized Speech Clarity**
FrontRow's patented OptiVoice™ technology is designed to emphasize critical speech sounds, so kids comprehend even more.
- Easy Lesson Capture**
The Juno lesson capture system records screen and audio, then automatically titles and prepares the recordings for upload.
- Class2Class**
Supports distance learning by removing audio echo when using Skype™ and other tools.
- Voice Command**
Control Juno and other devices, or control recording by speaking simple voice commands into the teacher microphone.
- Teacher Priority**
PrioriTeach™ gives priority to the teacher microphone by reducing the volume of all other devices and microphones when the teacher microphone is used.
- Advanced Software Control**
Volume, 12-band EQ, speaker balancing, and more are controllable via Teacher Edition Software while keeping the daily user interface neat and simple.

ITM-01 JUNO PENDANT MICROPHONE



1 Amazing Sound Quality

Superb pick up and audio quality thanks to a high-isolation microphone suspension, broad frequency response, and low-distortion direct digital synthesis.

2 Mute Indicator

OFF Un-muted
SOLID RED Muted

3 Power Indicator

SOLID GREEN Power On
OFF Standby

4 One-Touch Button

Controls all of the features of the Pendant Microphone. Use with voice command to activate the Juno lesson capture software and control your Juno Tower.

When the Pendant Microphone is in standby mode:

PRESS MOMENTARILY Awaken

When the Pendant Microphone is active:

PRESS MOMENTARILY . . . Mute / Un-mute
PRESS AND HOLD . . . Issue Voice Command

5 Superior Comfort

Lightweight (just 73.7g/2.6oz) with soft backing that provides comfort and reduces friction noise from contact with clothing, buttons or jewelry. Ergonomic lanyard suspension points keep the mic stable and help keep it from swinging away from the body when leaning over to help a student.

6 Battery Indicator

In Use

OFF Battery Charged
FLASHING RED Battery Low

When Charging

SOLID RED Charging
SOLID GREEN Fully Charged

7 Lithium Ion Battery

3-year life expectancy, lightweight and rechargeable.

8 Charging/Programming Jack

For charging via USB cable or for configuring settings.

9 Portable Audio Interface

3.5mm audio input jack for wireless transmission from any secondary audio source such as a computer or MP3 player.

10 Charge Contacts

For use with the optional IMC-01 microphone charger.

Adjustable Power

Factory set to achieve complete coverage in a typical classroom with 7 hours of talk time. Increase talk time or expand coverage for very large rooms with a quick software adjustment.

Programmable Channels

Program the switch positions to 2 of 7 available channels.

Digital Naming

Assign custom names to microphones for easy identification on the Tower LCD and Desktop Software.

Data Transmission

Reports battery status to Desktop Software, visible from an interactive whiteboard.



SPECIFICATIONS

Transmission type: Infrared

Transmitting frequency: 2.1MHz, 2.3MHz, 2.4MHz, 2.8MHz, 3.3MHz, 3.6MHz programmable

Frequency response: 70Hz – 8kHz

Microphone: Unidirectional cardioid

Battery life: 7 hours (typical)

Battery type: Li-Ion, 3.7V, 850mAH

Operating range: 18.3m/60ft, line of sight (typical)

Size (wxhxd): 7.4 x 6.6 x 1.3cm/2.9 x 2.6 x 0.5in

Weight: 73.7g/2.6oz (with battery and lanyard)*

USER CONTROLS

- wake/mute/voice command button
- channel select

INPUTS/OUTPUTS

- 3.5mm aux input
- charge/programming jack

*Competitor models report weight without lanyard

ITM-01 ACCESSORIES



Li-Ion battery



audio cable



micro USB cable



Teacher Edition Software
(Windows or Mac OS)

ISM-01 JUNO PASS-AROUND MICROPHONE



- 1 Amazing Sound Quality**
Superb pick up and audio quality thanks to a high-isolation microphone suspension, broad frequency response, and low-distortion direct digital synthesis.
- 2 360° Emitter Diodes**
Lets students hold the Pass-Around Microphone the way it's most comfortable for them without worry of dropout.
- 3 Power Indicator**
SOLID GREEN.....Power On
OFF.....Power Off
- 4 Battery Indicator**
In Use
OFF.....Battery Charged
FLASHING RED.....Battery Low
When Charging
SOLID RED.....Charging
SOLID GREEN.....Fully Charged
- 5 Small and Lightweight**
At less than 15cm/6in tall and just 2.5 oz, the microphone is much easier for students to use.

- 6 Power/Push-to-talk Switch**
PRESS AND HOLD.....Push-to-talk
PRESS AND SLIDE UP.....Power On
- 7 Name Plate**
For adding a name or room number for easy identification.
- 8 Lithium Ion Battery**
3-year life expectancy, lightweight and rechargeable.
- 9 Charging/Programming Jack**
For charging via USB cable or for configuring settings.
- 10 Portable Audio Interface**
3.5mm audio input jack for wireless transmission from any secondary audio source such as a computer or MP3 player.
- 11 Charge Contacts**
For use with the optional IMC-01 microphone charger.

- 12 Comfortable Hands Free Option**
Easy, comfortable lavalier clip makes reading in front of class simple and lets the Pass-Around Microphone double as a lightweight teacher microphone.

Adjustable Power

Factory set to achieve complete coverage in a typical classroom with 7 hours of talk time. Increase talk time or expand coverage for very large rooms with a quick software adjustment.

Programmable Channels

Program the switch positions to 2 of 7 available channels.

Digital Naming

Assign custom names to microphones for easy identification on the Tower LCD or in the optional FrontRow Desktop Software.



SPECIFICATIONS

- Transmission type:** Infrared
Transmitting frequency: 2.1MHz, 2.3MHz, 2.4MHz, 2.8MHz, 3.3MHz, 3.6MHz programmable
Frequency response: 70Hz – 8kHz
Microphone: Unidirectional cardioid
Battery life: 7 hours (typical)
Battery type: Li-Ion, 3.7V, 850mAh
Operating range: 12.2m/40ft, line of sight (typical)
Size (wxhxd): 3.8 x 14.7 x 2.2cm/1.5 x 5.8 x 0.85in
Weight: 70.8g/2.5oz

USER CONTROLS

- on/off
- push-to-talk
- channel select

INPUTS/OUTPUTS

- 3.5mm aux input
- Charge/programming jack

ISM-01 ACCESSORIES



Li-Ion battery



micro USB cable

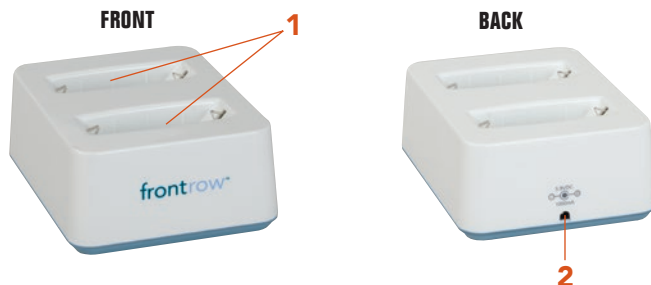


lavalier clip



Teacher Edition Software
(Windows or Mac OS)

IMC-01 JUNO PENDANT AND PASS-AROUND MICROPHONE CHARGER



- 1 Charging pockets**
Both charging pockets can be used to charge either the Juno Pendant Microphone or Pass-Around Microphone
- 2 Power jack**



SPECIFICATIONS

- Size (wxhxd):** 8.9 x 4.6 x 11.4cm/3.5 x 1.8 x 4.5in
Weight: 226.7g/8oz
Power supply: 5.9V dc

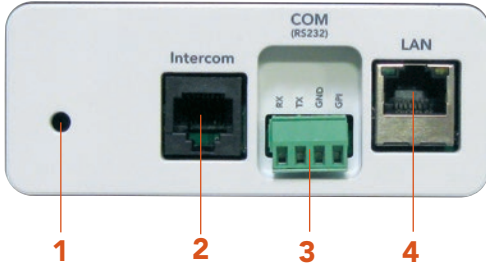
IMC-01 ACCESSORIES



power supply

EXPANSION MODULES

JUNO CONNECT™ COMMUNICATION MODULE



- 1 Onboard Microphone**
Communicate with front office even without the Juno mic
- 2 Intercom Input (optional)**
Connect the CB75 intercom panel ceiling mic for communication with front office when push-to-talk is required (can also be used with CB85)
- 3 Serial Control**
Send RS232 commands to serial projectors and other AV devices via voice or Teacher Edition Software
- 4 Network Connection**
Sends commands to IP addressable devices via voice or Teacher Edition Software. Connect to front office via Conductor software. Communicates over standard 10/100Mb/s networks (auto sensing) using either TCP/IP or UDP protocols.
- 5 Display Shows Active Page or Intercomm Call**
- 6 Clearer, Easier Communication with Front Office**
Use the Juno microphone to call the office; hear higher quality paging and intercom audio through the tower

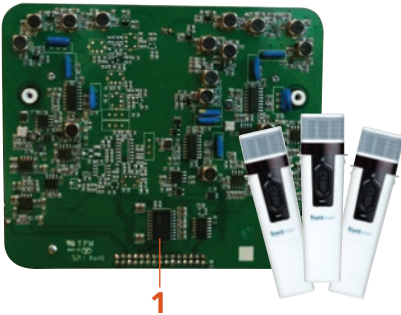


SPECIFICATIONS

Network Support: 10/100 Mb/s (Auto Sensing)
Baud Rate: 2400 – 115,000 baud



CHANNEL EXPANSION MODULE



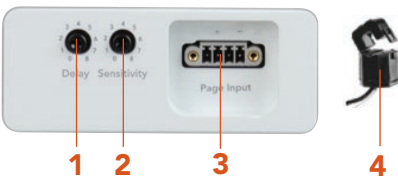
- 1 Three additional IR channels**
Add up to 3 additional microphones (total of 5)



SPECIFICATIONS

Receive Frequencies: 2.8MHz, 3.3MHz, 3.6MHz
Signal-to-noise: >70dB
THD: <1% @ 1kHz

PAGE OVERRIDE MODULE (FOR ANALOG PAGING SYSTEMS)



- 1 Time Delay Control**
- 2 Sensitivity Control**
- 3 Captive Screw Terminal**
- 4 Inductive Coupler**



SPECIFICATIONS

P.A. Input: Captive screw terminal magnetic coupling
Sensitivity: 70mVrms (minimum)
Delay: <500mSec to >5Sec

SPEAKER EXPANSION MODULE



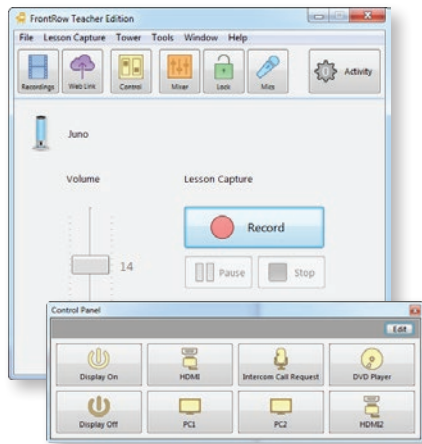
- 1 Captive Screw Terminal**



SPECIFICATIONS

Frequency response: 50Hz – 20kHz
THD: <1%
Maximum audio output power: 2 x 8w (8Ω), 2 x 16w (4Ω)

Windows



Lesson Capture

Teacher Edition Capture is the basic version of Teacher Edition. It makes lesson capture and sharing effortless so students are always prepared. Records screen and audio, then automatically titles the recording based on instructor's schedule and saves it to a pre-determined location. Teacher Edition is available with any FrontRow classroom audio system including Juno, Pro Digital, and ezRoom.

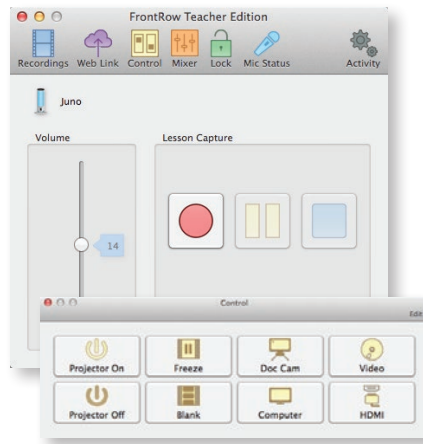
AV Control

Teacher Edition Control is a plug-in for Teacher Edition for use with ezRoom or Juno Connect. Teacher Edition Control enables teachers to control projector, audio setup, and lesson capture within the same application. Program up to eight buttons to turn display on and off, change input sources and more.

Juno Control

When used with a Juno system, Teacher Edition also makes controlling Juno settings easy. Control volume and other audio settings right from the desktop.

Mac OS



SPECIFICATIONS

Recording types: Screen and audio, screen only, audio only

File format: mp4, m4a

Recording length: Unlimited

SYSTEM REQUIREMENTS

Windows

- Windows XP SP3, Windows Vista, Windows 7, Windows 8
- 2GHz Processor or faster
- 1 GB of RAM
- 90 MB of hard disk space for the application (recordings will require additional hard disk space)

Mac OS

- Mac OSX - 10.6 (Snow Leopard) or later
- 64-bit Processor (Core 2 Duo or later)
- 150 MB of hard disk space for the application (recordings will require additional hard disk space)

LOCATIONS

Australia

Phonic Ear
629 Nudgee Road
Nundah QLD 4012
Australia
Freecall: 1 800 PHONIC
fax: 1300 737 983
web: www.gofrontrow.com.au

Canada

FrontRow
6950 Creditview Road, Unit 1
Mississauga, ON L5N 0A6
toll-free: 800.340.9894
tel: 905.461.5300
fax: 905.677.7760
web: www.gofrontrow.com

Scandinavia

Phonic Ear A/S
Kongebakken 9
2765 Smørum
Denmark
tel: +45 3917 7101
fax: +45 3927 7900
web: www.gofrontrow.com
www.phonicear.com

New Zealand

Oticon New Zealand Ltd.
142 Lambton Quay
P.O. Box 9128
Te Aro, Wellington
toll-free: 800 OTICON
toll-free fax: 00800 FAX OTICON
web: www.oticon.co.nz

United Kingdom

PC Werth Limited (UK Distributor)
Audiology House
45 Nightingale Lane
London SW12 8SP
tel: 020 8772 2700
web: www.soundfield.info

USA/Global

FrontRow
Corporate Headquarters
1690 Corporate Circle
Petaluma, CA 94954-6712
toll-free: 800.227.0735
tel: 707.769.1110
fax: 707.769.9624
web: www.gofrontrow.com



TECHNOLOGY FOR STUDENT ACHIEVEMENT



Lesson Capture

Lesson Capture. Using simple voice commands, Teacher Edition software records screen and audio then automatically titles and prepares recordings for upload so students can review the video at night.



Class2Class

Class2Class. Using FrontRow with tools like Skype™ and Adobe® Connect™, you can easily set up a real-time audio/video connection between your class and any location – one that's clearly heard by everyone without echo.



PrioriTeach

PrioriTeach. PrioriTeach gives priority to the teacher microphone by reducing the volume of all other devices and microphones when the teacher microphone is used. Control how quickly and to what level the volume is reduced, how quickly the audio resumes, or turn the feature on and off.



VoiceChoice

VoiceChoice. Increase talk time or expand coverage for very large rooms with a quick software adjustment.



Voice Command

Voice Command. A teacher's voice is a powerful educational tool – now more than ever. The Juno digital sound system listens as attentively as students do, so teachers can control important functions simply by talking to it.



OptiVoice

OptiVoice™ clarity. FrontRow's patented, powerful tool for test-taking, directions, and ELL instruction. Fragile consonant sounds carry about 75% of the meaning in speech but are easily destroyed by background noise. OptiVoice strengthens these critical sounds, doing the work of a 12-band equalizer with a single switch.



SonicSuffusion

SonicSuffusion™ provides intelligent sound distribution. JUNO has three digitally-controlled drivers in a single unit that evenly fills the room with the kind of exciting, multi-layered stereo sound you'd expect from a much larger installed system.



PFM Friendly

Fast, proper connection to Personal FM systems

Audiologists can quickly and confidently connect students' personal FM transmitters and maintain excellent transparency. Teacher and fellow-student voices plus media audio are delivered directly to the child's personal receiver.



Adapto



DSP TEXAS INSTRUMENTS TECHNOLOGY



SmartCharge



Energy Smart



Lead Free

Adapto Digital Platform. Faster than the speed of thought — a blistering 375 times per second on the VC5502™ processor by TEXAS INSTRUMENTS — the ADAPTO platform automatically adjusts sound quality, power usage, and other complex details. ADAPTO adapts so teachers can teach.

SmartCharge™ peace of mind. The greatest killer of electronics is accidental recharging of alkaline batteries. SMARTCHARGE technology only charges batteries that are safe to charge — protecting your investment for years to come.

Save money (and maybe the planet). FrontRow products use significantly less energy — up to 63% less — than other systems. They're a smart choice for schools and the environment.

Earth-friendly design. FrontRow's design and manufacturing practices keep lead, mercury, PBDE and other toxins out of its products — and out of the environment.



frontrow™
your school. connected.