

Connecting people with technology

IMPACT Max

#clevertouch | info@clevertouch.com

IMPACT Max Available in a range of sizes

65" | 75" | 86"

Audio

2 x high powered 16W speakers for crystal clear sound quality from anywhere in the room.

Remote Management

View, control, update and troubleshoot remotely. Your IT office can work on your Clevertouch screen without needing to come to the classroom. You'll always have the latest versions of apps and software without needing to install any files when you should be teaching.

Cloud Accounts

Sync with your Cloud accounts so that you can work anywhere at any time.

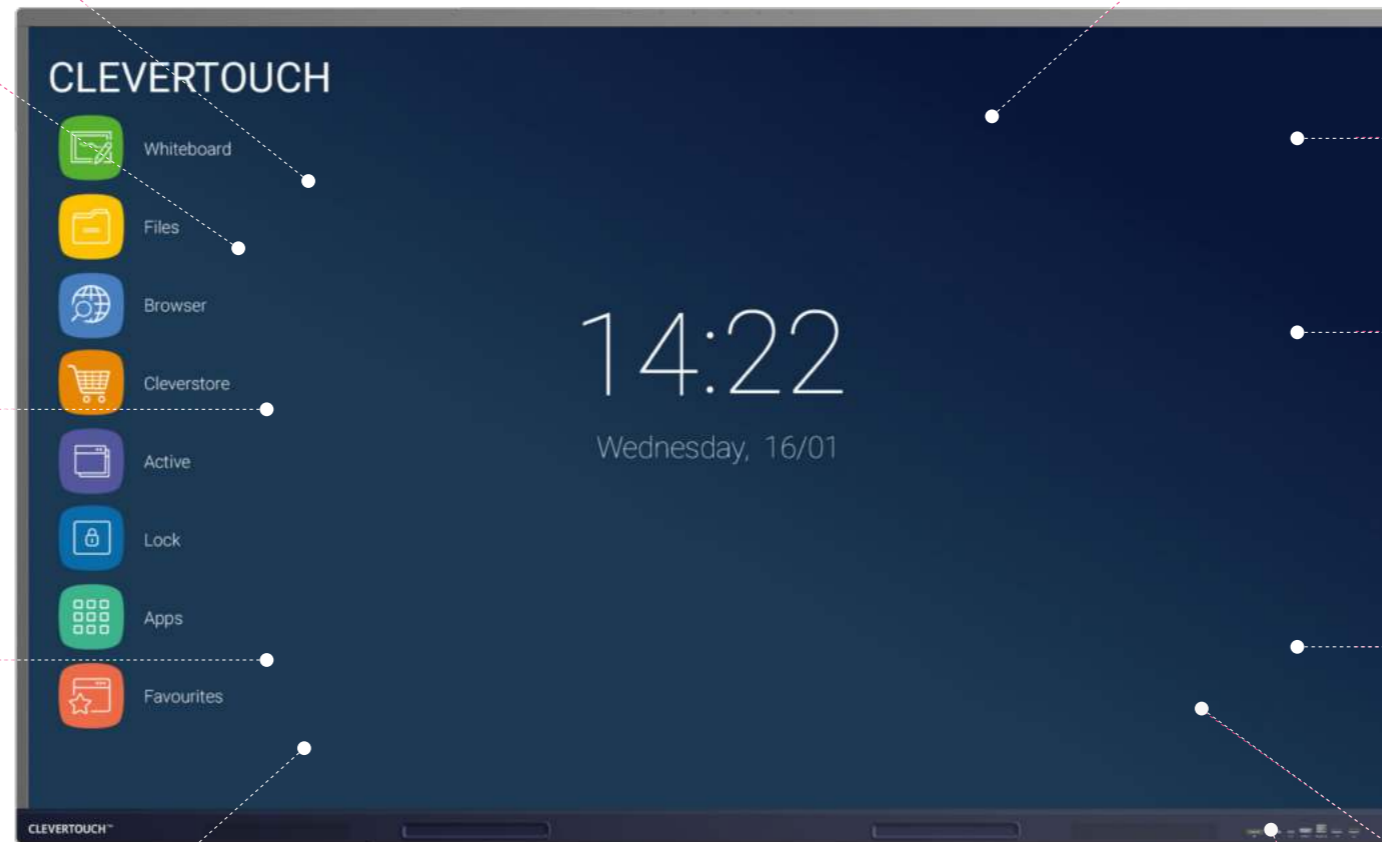


High Precision Technology

Our patented Super Glide Touch technology offers the most fluid writing experience on a touchscreen. It's as smooth as writing on a whiteboard - with no lag. With the ability to differentiate between palm-erase, fingertouch, and stylus-writing, there's no need to change settings mid-flow.

Clevershare

Screen mirror with images, video and audio.



LUX 11.0

Easy to use interface. Simple, quick, intuitive apps and gestures designed to make everyday tasks seamless.

NEW

Cleverstore 3.0

Access hundreds of free teaching apps to make lessons more engaging.

NEW

Comprehensive Warranty

No ongoing subscription charges.

Infinity Whiteboarding

Never run out of space with our infinite canvas. With numeracy tools, handwriting-to-text recognition, and the ability to insert images and shapes, all of which can be saved, printed or shared to student devices.

Connectivity

Huge connectivity including one of the latest USB-C ports with charging ability.

LYNX Whiteboard

Whiteboarding made easy with a huge selection of pen & art tools to choose from.

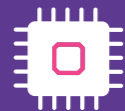
Built-in light sensors

NEW

What's New?



Built-in array microphone - all lessons can be recorded with sound



4GB RAM
32GB ROM



Latest generation USB-C with charging and hardware optimization



2 x 16W speakers for room-filling sound



Android 11

IMPACT Max is powered by Android 11.

NEW



Quick Launch Menu for instant teaching tools

Your most commonly used apps are available with one touch and are easily accessible via the Quick Launch Menu.



The Clevershare App is free to download and compatible with Android, Windows, iOS and Chrome devices. Up to 50 devices can connect with the Clevertouch screen and share content – images, video, and audio. The presenter has full control over what is shared, and can show up to 9 device screens simultaneously, increasing student collaboration and participation within every lesson. Now includes touch-back.



Make notes, diagrams or images, add and scroll through multiple pages, insert an image or change the background colour. Now includes handwriting and formula recognition.



Double click on files to open them, as well as easily copy, cut and paste, so it's just like using a PC. Personal Cloud Storage integration.



Explore the internet without needing a computer, using the IMPACT Max, Chrome and Chromium browsers.



Cleverstore contains hundreds of apps in all subjects and a range of languages, including literacy, STEAM and languages. Each app is tested by our team, to make sure no adverts, in app purchases, or inappropriate content gets through. We've partnered with the most popular educational app developers to give you apps that you can really make use of in the classroom.



Easily go back to recently used apps using the Active button with split-screen mode.



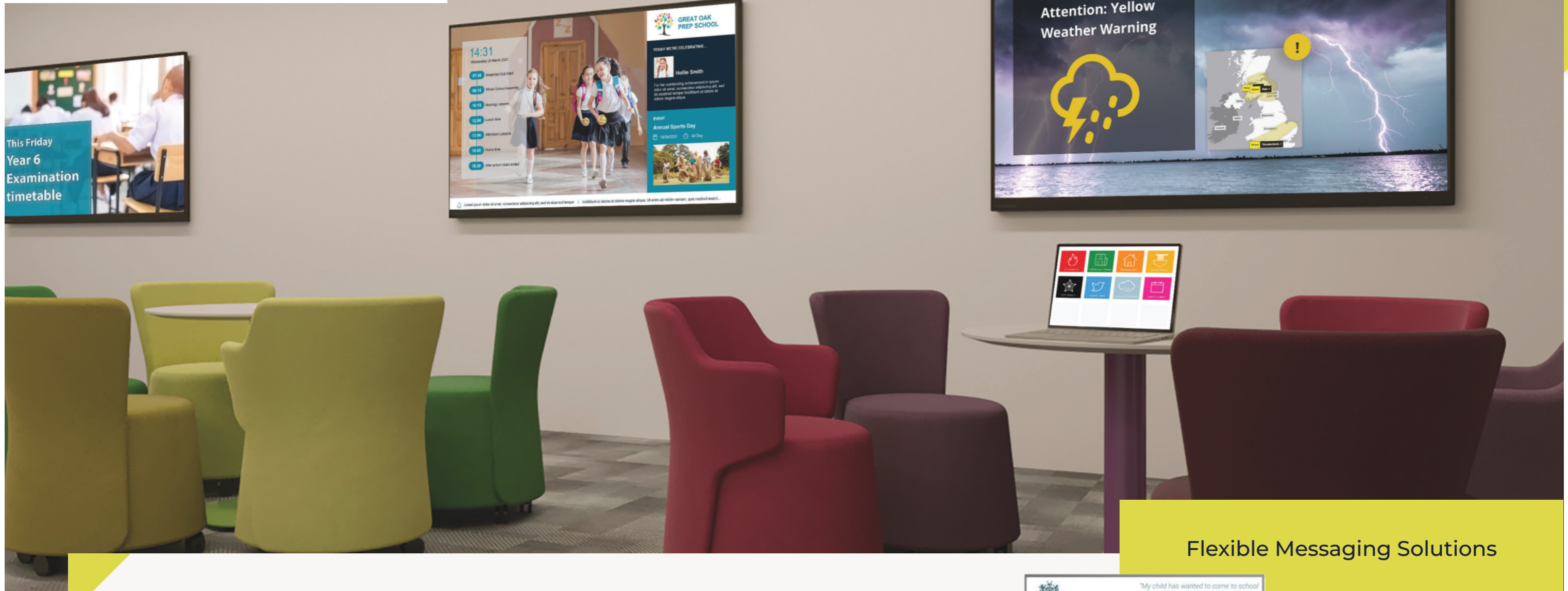
Protect your Clevertouch with a password by using Lock.



All of your integrated and Cleverstore apps can be found here.



All your favourite apps in one place, including Settings.



Flexible Messaging Solutions

Exclusive to Clevertouch

ClevertouchLive App: Messaging

With ClevertouchLive App your IMPACT Max isn't just a screen for teaching or presenting, it's also a communications tool. Use it to broadcast messages, alerts and important information to students, staff and visitors.

- Daily news and activities
- Weekly lunch menu
- Live video messages from the school office
- Emergency announcements and fire drills



Dynamic and integrated

ClevertouchLive: Home Screen

Customise your home screen so it's unique to your school or district. With the ClevertouchLive App, you can group screens so they are representative of your messaging and create user and group profiles.

Personalise your launcher page

- Group by subject, schools, age group, campus, district and more - it's totally flexible
- Show the apps you want. Either from the Cleverstore, or add your own
- Lockdown settings so teachers have to stay within your guidelines
- Add your school logo, colours and background images
- Custom clocks

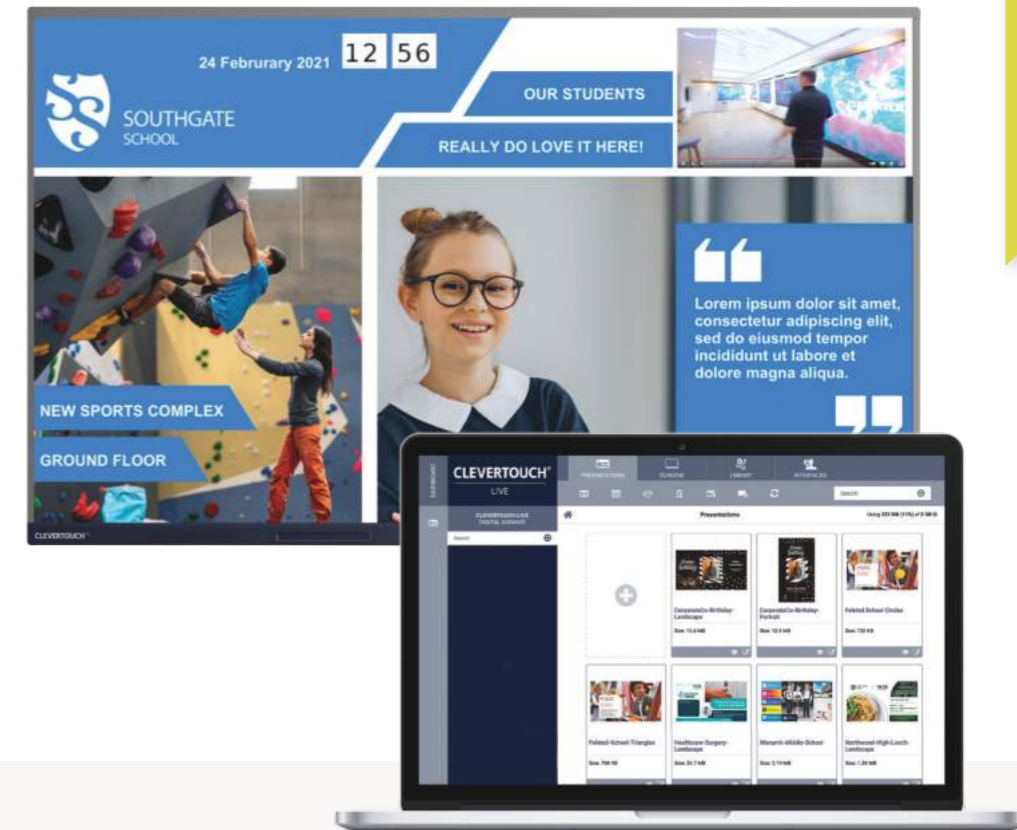
It's simple!

- 1** Go to ClevertouchLive.com
- 2** Sync your IMPACT Max screen
- 3** Choose your launcher





Create teacher or group profiles
Log into any connected screen in your district and get your apps, home screen, settings and more.



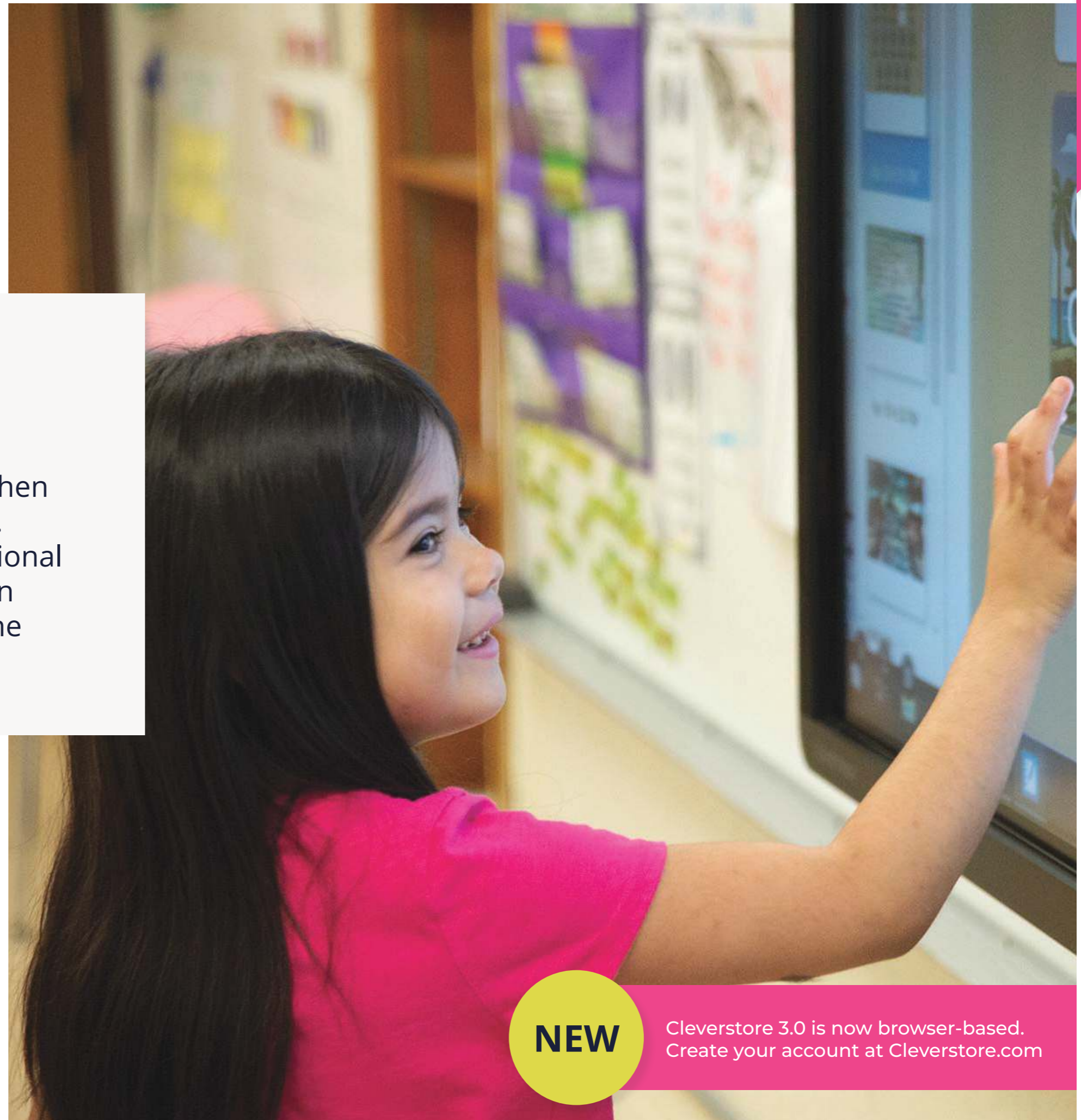
Dynamic and integrated

ClevertouchLive

ClevertouchLive is the Content Management System Platform (CMSP) for all Clevertouch Technologies innovations.

Personalise your launcher page

- Display digital signage messaging when it's not in use.
- Add apps from the Cleverstore or upload your own apk files - send to all your interactive displays without needing to manually install them on individual screens.
- Send alerts and announcements to your audience.
- Weather warnings, stranger alerts, fire alarms.
- Call staff/students to other locations.



Increase Student Engagement

Cleverstore 3.0 **NEW**

It's easy to hold students' attention when there's something new on the screen. We've hand-picked apps from educational app developers that support Common Core State Standards in the US and the National Curriculum in the UK.

Apps for everyone

With apps for all ages and in most subjects, there are loads to choose from to help support your lessons. From Coding to Math, Literacy, and Science, as well as games and stories, Cleverstore has everything you could need.

Dual language

Not only are most of our apps available in a variety of languages, but some also support dual language, allowing you to teach languages such as French, Spanish, and German as you go along.

A store you can trust

Our App Team checks every app that's submitted to the store so there is no inappropriate content. We want to enable teachers to download apps as lesson resources – so all apps are suitable for the classroom.

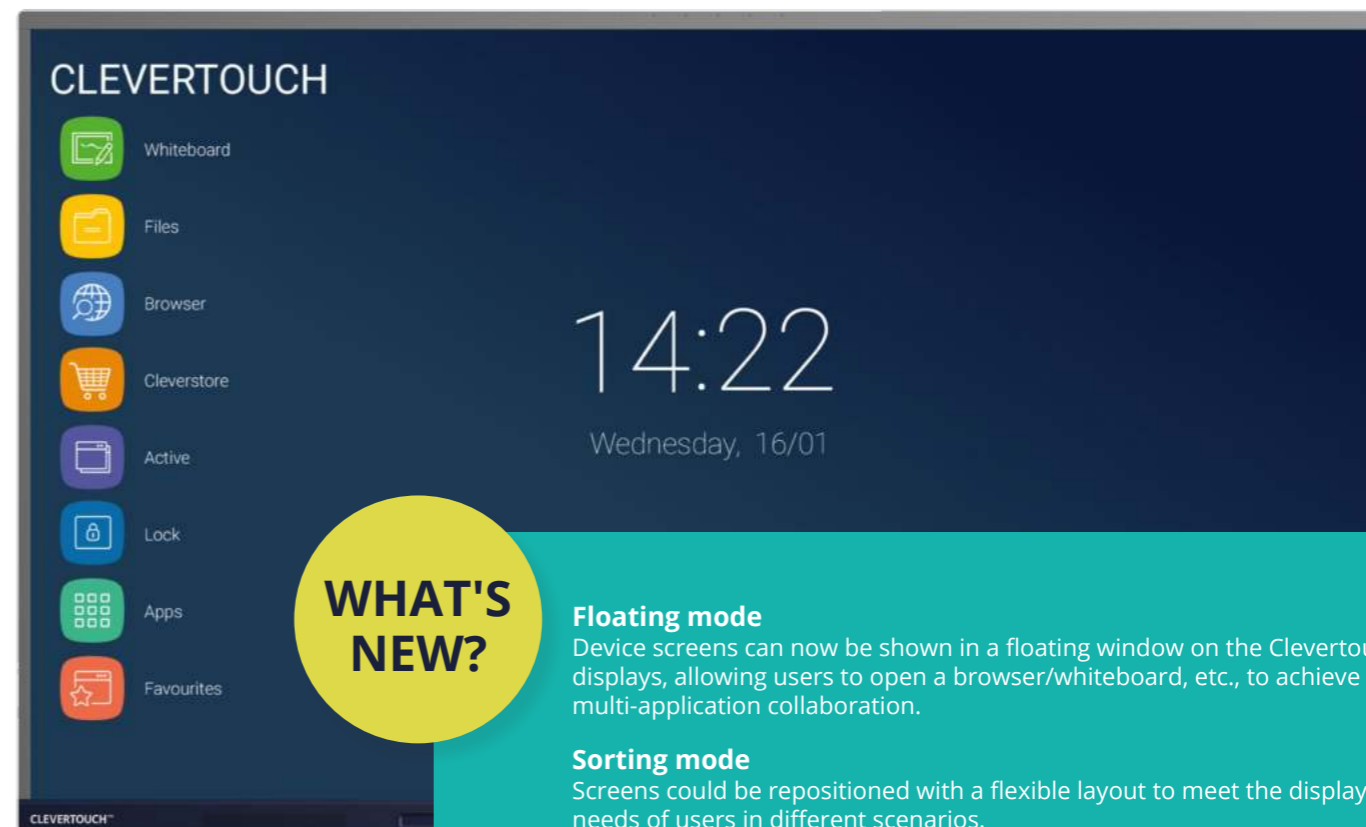
NEW

Cleverstore 3.0 is now browser-based. Create your account at Cleverstore.com

Clevershare 5

Collaborate with ease - connect up to 50 devices, including phones, tablets and laptops. Screen mirror with images, video and audio.

With touch-back for two-way control, the presenter has full control over what is shared and can show 9 screens simultaneously, increasing collaboration and participation within every session.



WHAT'S NEW?

Floating mode

Device screens can now be shown in a floating window on the Clevertouch displays, allowing users to open a browser/whiteboard, etc., to achieve multi-application collaboration.

Sorting mode

Screens could be repositioned with a flexible layout to meet the display needs of users in different scenarios.

Image quality

Optimized casting image quality, three kinds of clarity can be selected: ordinary, better, and excellent.

Share content with any device

Up to 50 devices can connect with the Clevertouch screen and share content - images, video, and audio. Now with touch-back for two-way control.

The presenter has full control over what is shared and can show up to 9 device screens simultaneously, increasing collaboration and participation within every session.

Mastering Mode

This optional mode will allow you to manually accept or reject from the Clevertouch screen when someone attempts to connect via Clevershare.

Chromecast and Airplay

There is an optional button you can swipe in the settings that will allow you to natively connect your device this way.

Clevershare App

Any device can download the Clevershare App and connect instantly by typing in the code on the Clevertouch screen. Clevershare App is free to download and compatible with Android, Windows, iOS, and Chrome devices.

Clevershare Dongle (optional extra)

Use the USB-C Clevershare dongle to share content. No need to download any app or driver, so ideal for companies that do not allow downloads to devices.

How to connect

You can connect via the Clevershare App if your device is on the same Network as the Clevertouch. Use Advanced Mode for additional encryption and dual sub-networks. There is a Hotspot option if you are unable to use the network.



Optional Extra

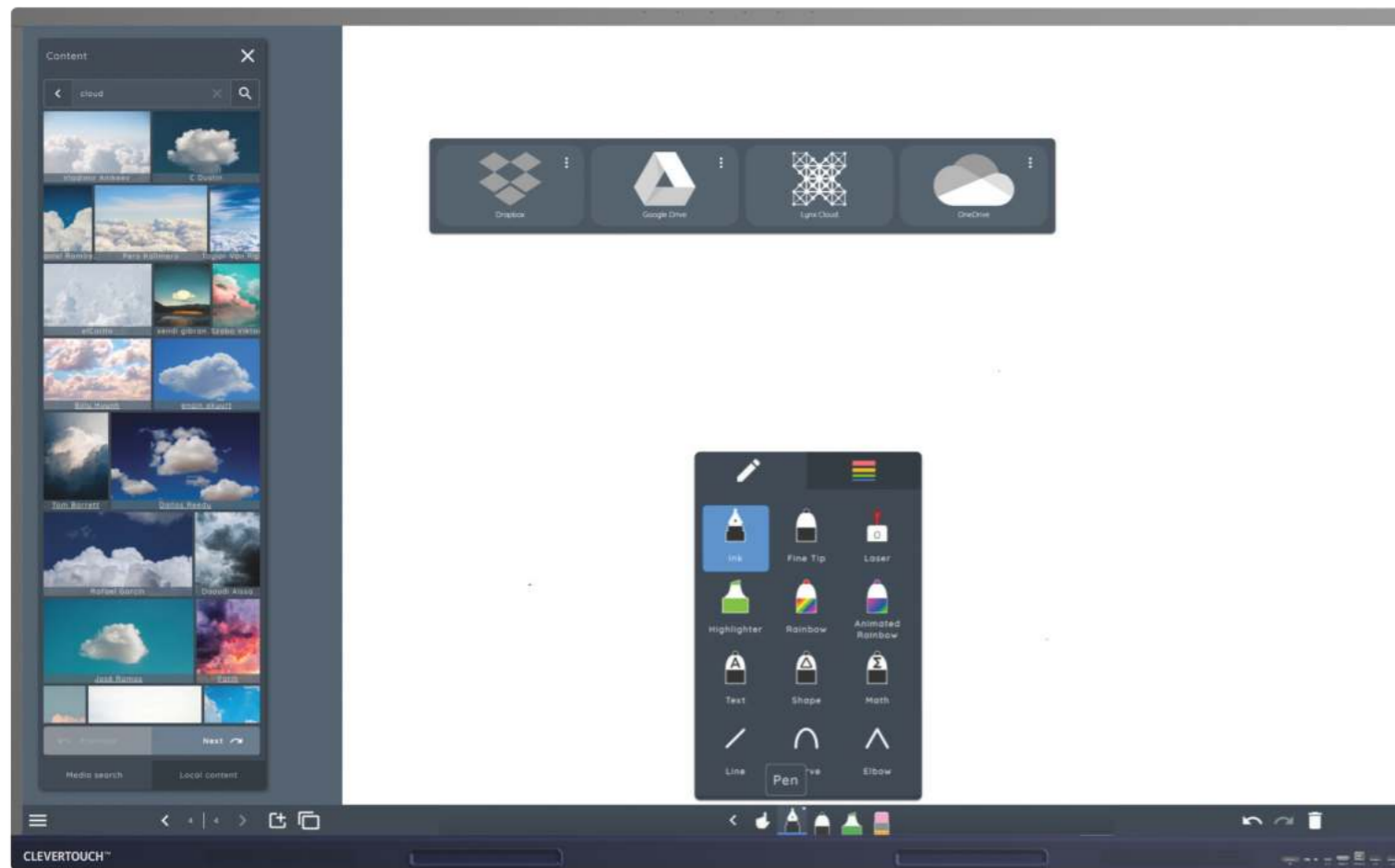


Clevershare Dongle

- USB-C connection
- Compatible with IMPACT Max
- Works in conjunction with the Clevershare app

Clevershare App

- Works on any device
- Free to download
- Compatible with Android, Windows, iOS & Chrome Devices



Captivating Lessons

Natural handwriting

Our new pen type allows users to have a more natural feel to their writing. Pressure and velocity will help to decide the thickness of the line as the user writes – like a real pen.

Multi-Purpose

Split the screen so that you can look online while your lesson is open, and drag content across.

Dual Pen

Two users can choose different pens, or different tools, and use them simultaneously, providing a more natural feel.

Increase student Engagement

Search videos from YouTube, images from Unsplash, panoramic images – all without leaving your app. Safe Search enabled, ensuring content is suitable for children.

Get Creative

With dozens of teaching tools at your fingertips.

Fun, Shareable Activities

Create your own activities with customizable content. Activities will automatically be saved to your LYNX Cloud, so that you can share them with colleagues.

Collaborate with ease

Students can scan a QR code with their personal device and either join the activity during the lesson, or save it to do at home.

Quickly switch formats

Convert files from Office formats into LYNX files, ready to be used within LYNX. Word, Excel and PDF files can easily be converted. Drag interactive whiteboard or Smart Notebook files in bulk and they will automatically convert into a LYNX file.

Whiteboarding made easy with a huge selection of pen & art tools to choose from

LYNX Whiteboard

The most dynamic, intuitive user experience of any whiteboard – completely redesigned for a touchscreen, with drag and drop, pinch to zoom, and easy swipe menus.



LYNX Whiteboard has now partnered with PhET to give you over 80 FREE STEM activities to use in your classroom or set as homework.



Cloud access for distant learning with LYNX Whiteboard

Hundreds of tools to increase student engagement in a blended learning environment.

Access the cloud & Log in from anywhere

Create lessons on the go, at home, or in another classroom, on any device.

Your school can set up a LYNX Cloud account, so content and resources can be shared.

Great for distance learning

Set work, deploy and give students their own log-ins.

Download & Upload

Log into any Clevertouch and download your LYNX files, great if you aren't in your usual classroom.

Set Homework

Set homework activities for your students

Sync with other cloud-based drives

Get content from Dropbox, OneDrive, LYNX Cloud or Google Drive and input it directly into your lessons

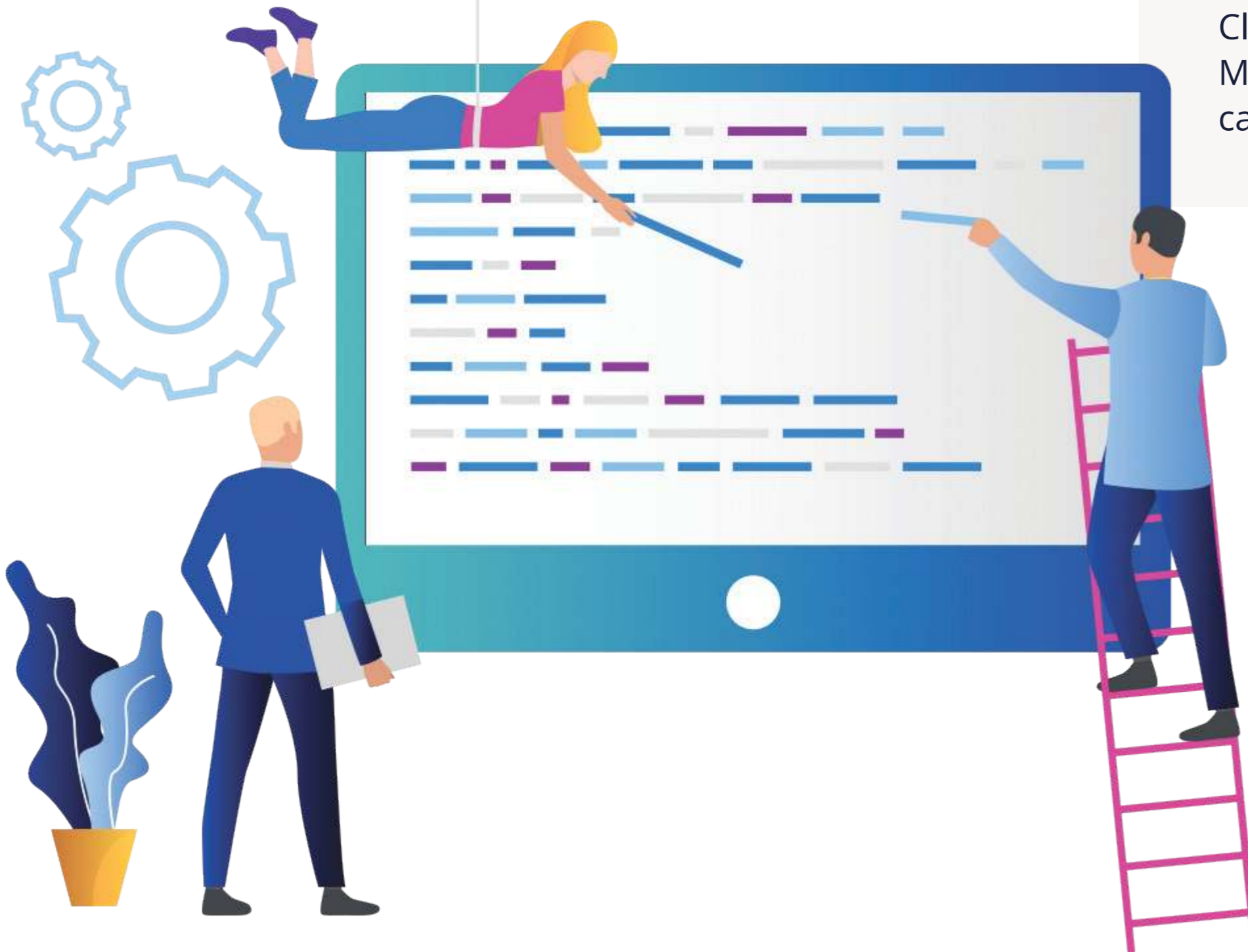




Take Control

Remote Management

IT departments & administrators can take control, without needing to leave their office. Control multiple Clevertouch devices by linking your entire fleet of Clevertouch screens to your Remote Management MDM account, so that you can control them from anywhere.



Update or remove apps

With the functionality to add .apk files to some or all of your Clevertouch displays, your organisation can always have the latest apps available to use.

Over-The-Air updates

Our OTA updates are just one click away to get the latest firmware on your screen. We will never charge you for firmware updates.

View status information

IT managers can troubleshoot without needing to leave their office. Look up individual Clevertouch screens, view the display in realtime, edit settings, or restart devices remotely.

Group and tag

If you have a group of screens being used by a certain department, you can deploy the same apps and settings, so that there is a standardised experience for everyone in that department.



Display

Diagonal Size	65" 4K, 75" 4K, 86" 4K
Screen Type	TFT LCD - Direct LED Backlight
Aspect Ratio	16:9
Display Colours	1.07 Billion (10 bit)
Resolution	4K UHD (3840x2160 @60Hz)
Response Time	5ms
Refresh Rate	60Hz
LCD Viewing Angle	178°
Brightness	400 cd/m2
Contrast Ratio	65" 1200:1 75" 1200:1 86" 1200:1
Dynamic Contrast Ratio	65" 5000:1 75" 5000:1 86" 5000:1
Glass Hardness	Tempered Glass - Mohs Level 7
Glass Type	Low Parallax 1mm Air Gap - Heat tempered - Anti Glare & Anti smudge for durability - Super Glide Surface ***
Main Board	Amlogic T982 (SoC)
Life of Screen	50,000 Hours
NTSC	65" 72% 75" 72% 86" 68%

Interactivity

Writing Technology	High Precision IR Technology
Continuous Touch Points	20
Touch Resolution	32768x32768px
Response Time	5ms
Touch Accuracy	1.5mm
Minimum Object Size	3mm
Touch Tool	Finger, passive pen, opaque objects
Simultaneous Writing	Yes
Ink In Tools	Yes - Lynx
Pens Included	2
Pen Type	Dual Recognition Stylus
Pen Holder	Integrated magnetic pen holders
Pen Tip Diameter	3mm/7mm
Pen & Touch Differentiation	Yes
Pen Identities	2
Palm Rejection	Yes
Annotation Over Any Source	Yes
Classroom Essential Apps	Includes Whiteboard, Annotate, Timer, Media Players, Browser, PDF Reader, Screen Record, Spinner, Voting, Maths Tools
Compatibility*	Windows 10, Linux, Mac, Android, Chrome
Tracking Rate	6m/s
Scan Rate	200Hz
Gestures & Edge Swipes	Windows Supported, OSX With additional Driver

Connectivity

OPS Slot	1 - Intel Spec 80Pin
HDMI In	3
HDMI Out	1
USB-A 2.0	1
USB Touch (type B)	2
USB A 3.0 (faster data transfer)	4
USB C (Video, Audio & Touch)	1 (supports 65W charging)
LAN In (RJ45)	1 GB
LAN Out (RJ45)	1
RS-232	1
Wake-on-Lan	Yes
Wireless Adapter 2.0 + WAP	Yes
Clevertouch WiFi Module	Yes
Bluetooth	Yes 5.0
Displayport In	No
VGA In	1
Audio In	1
Optical Out	1
Headphone	1 (3.5mm)
Total touch out ports	2
NFC Reader / Writer	Optional Extra
Camera	Optional Extra
Proximity Sensor	No
Array Mic	Yes
WiFi	IEEE 802.11a/b/g/n/ac (2.4 and 5 GHz bands)
WiFi Speed	Capable of speeds up to 433Mbps

Computing

Operating System	Android 11
System Version	LUX 11
RAM	4GB
Internal Storage	32GB
CPU	Quad Core A55
GPU	Mali G52MP2
Android Resolution	4K
Android Module Slot	No
Integrated LUX UI	Yes

Power

Power Requirements	100-240V ~ 50/60Hz
Power Consumption (Standby)	≤0.5W
Ultra Quiet Fanless Design	Yes
Power Consumption	65" 178 Watts 75" 183 Watts 86" 195 Watts

Audio

Dual Front Facing, Bass Enhanced Speakers	2 x 16W
Audio Out	Yes
SPDIF / Fibre	Yes
Sound Channel	2
Line Array Microphone	Yes
Super Wide Sound	No

Operating & Storage Environment

Operating Temperature	0° to 40°
Storage Temperature	-20° to 60°
Operating Humidity	10% to 90% RH
Storage Humidity	10% to 90% RH
Altitude	Below 5000 metres

Physical Spec

Panel Dimensions	65" 75" 86"
Packed Dimensions	65" 1628*208*1005mm 75" 1863*225*1148mm 86" 2110*225*1291mm
Net Weight	65" 34.9Kg 75" 47.75Kg 86" 62.9Kg
Packed Weight	65" 43.68Kg 75" 61.9Kg 86" 80.6Kg
VESA Mount Point	65" 600x400mm 75" 800x600mm 86" 800x600mm

Warranty

Warranty term and upgrade options vary by region. Contact your local reseller or distributor for information and visit clevertouch.com/about/warranty

Compliance & Certification

Regulatory Certification	CE, FCC, UL, Energy Star & EEC
--------------------------	--------------------------------



Installation

The installation of this product should be completed by a qualified installer. Use of components not supplied by Clevertouch or not meeting minimum specifications may impact performance, safety and warranty. For more information, visit clevertouch.com

IMPACT Max Built-In Features

NUITEQ™ Snowflake	Yes
LYNX™ App With Online Lesson Planning	Yes
Cleverstore™ App Store For Education	Yes
Embedded Digital Signage	Yes
Clevershare™ Mirroring Any Device To The Board	Free for the life of the screen (touch back)
Integrated Personalised Accounts Profiles	Yes
Cloud Account Access	OneDrive, Google Drive
Embedded Room Booking	Yes
Whiteboard Annotation	Yes
Email Out Direct From Touchscreen	Yes
Scan QR Code For Saving Work	Yes
CleverMessage™ - Instant Alert Messaging	Yes
Over-the-Air Updates	Yes
Remote Management Of Touchscreens (MDM)	Yes - Five year license

Packed Contents - Inside your Clevertouch Box

What's In The Box	(1) Clevertouch IMPACT MAX (1) 1.5M Length HDMI Cable (1) 3M Length USB cable (A-B) (1) 1.5M USBC Cable (1) 3M Regional Power Cable (1) Remote Control (2) Batteries for Remote Control (2) Dual Recognition Stylus (1) User Guide (1) Quick Install Guide (1) Clevertouch WiFi Module
-------------------	--

Support

For all Clevertouch products, visit: support.clevertouch.com

Statement

Size and weight vary by configuration and manufacturing process, please refer to the actual product. The product images are for illustrative purposes only and may slightly differ in appearance, colour, size, etc. from the actual product. The description, illustrations, etc. in this document may subject to change in accordance with the latest product specification and performance. Should the above-mentioned change in the document become necessary, the document may be updated without written notice.

Digital Ecosystem

A unique digital solution for every space which redefines the way to distribute information and collaborate using technology.



Our products work together to help your business function smarter!

About us

Who are Clevertouch

Established in 2009, Clevertouch Technologies were the first interactive flat panel in the education market.

Clevertouch Technologies has offices worldwide, in UK, Finland, Sweden, the Netherlands, USA and Australia, confirming our position as the number one global brand for interactive flat panels in the global education market. Partnered with leading technology brands including Intel, Logitech, LYNX Whiteboard, DisplayNote and NUI TEQ Snowflake, IMPACT Max is the ideal solution for classrooms and beyond. With our roots dating back to the 1920s and a history as a family-owned company, now Clevertouch Technologies is proudly own by USA based Boxlight Inc.



Why Choose Clevertouch Technologies?

- ✓ Trusted Brand
- ✓ No ongoing cost
- ✓ Free training
- ✓ Part of a Digital Ecosystem of products – control them all from one online platform
- ✓ Supports Remote Learning
- ✓ Dedicated Support Team
- ✓ Free updates and new features



Bett Awards Finalist
2018 & 2019
Digital Devices



AV News Awards Winner 2018, 2019, 2020 & 2022
Collaboration Innovation / Product of the Year 2018 & 2020
AV Display Innovation of the Year 2019



ISTE and Infocomm
Best of Show Awards Winner
Tech and Learning 2018, 2019, 2020
AV Technology 2019 & 2020
Installation 2020



ISE Best of Show Winner 2020
Installation Award
AV Technology Award



AV Awards Winner
Interactive Screen of the Year
2016, 2017 & 2019
Manufacturer of the Year 2015



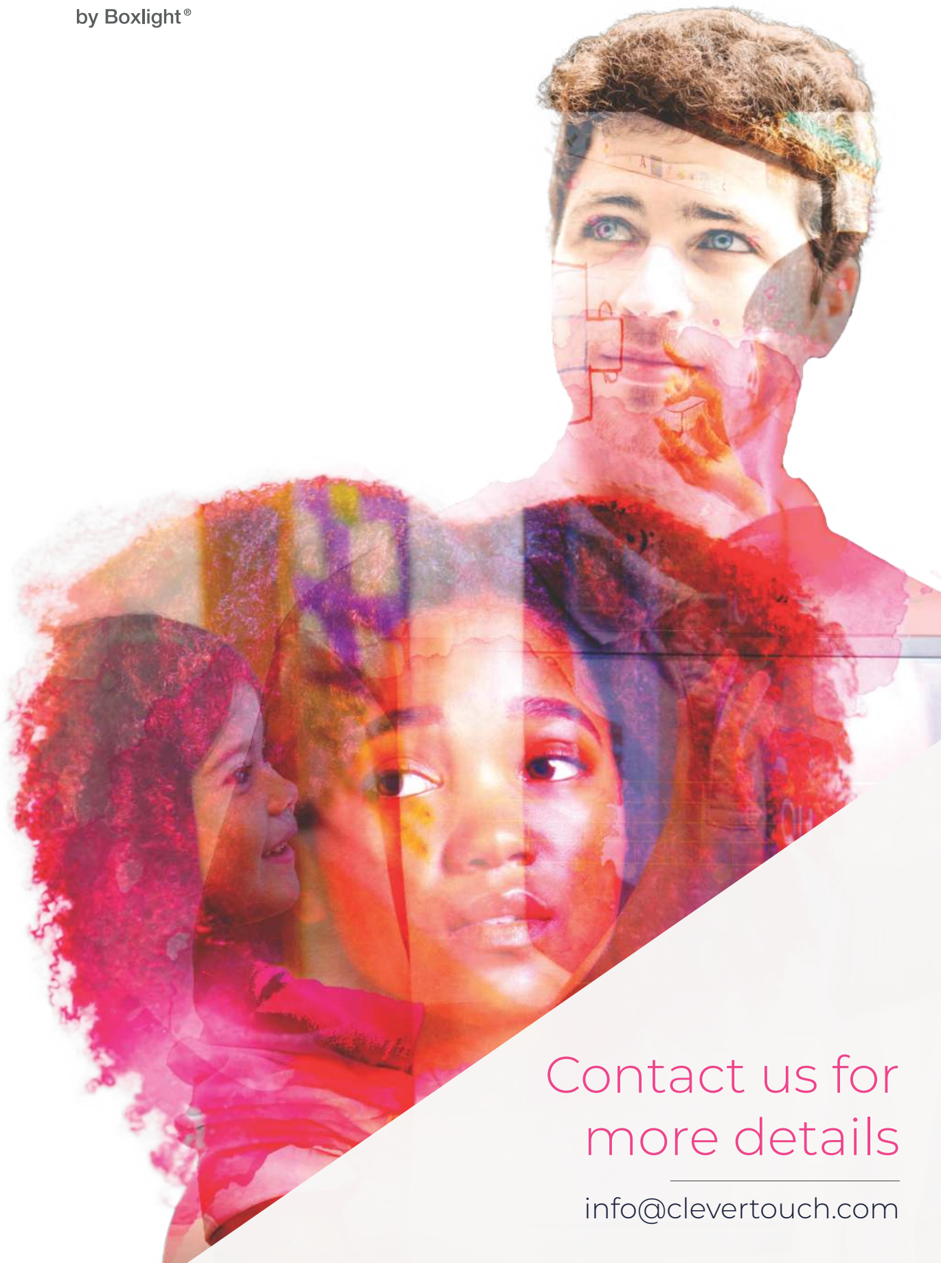
Inavation Awards Winner 2018 & 2019, 2021 & 2022
Technology for Collaboration and Conferencing Interactive
Display Product / Best Business Growth 2021

CLEVERTOUCH[®]

TECHNOLOGIES

by Boxlight[®]

clevertouch.com



Contact us for
more details

info@clevertouch.com