

# Clevertouch X5

**NEW**

Quality you can trust, value you'll love

The X5 redefines entry-level standards, offering powerful performance and essential features at an accessible price. Featuring 576GB of expandable storage for all your space needs, Google EDLA certificate to integrate your favourite apps, and 40 touch points for multi-user interactivity, the X5 delivers an innovative and collaborative experience at an exceptional value.



**NEW**

**EDLA Certified**

Access the Google Play Store and Google Workplace, along with the full Microsoft 365 suite, directly from the screen. Use apps such as Google Drive, Docs, Sheets, Slides, Teams, Word and PowerPoint.



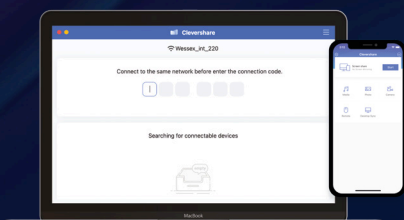
Available in a range of sizes  
65" | 75" | 86"

Software included at no extra cost

**CLEVER<sup>®</sup> LIVE**

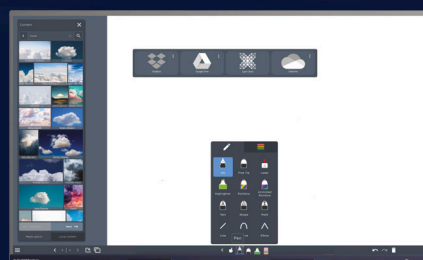
**CLEVERSHARE<sup>®</sup>**

**CLEVERMDM<sup>®</sup>**



**CLEVERSHARE<sup>®</sup>**

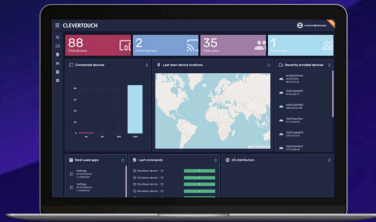
Download the Clevershare App to your Apple or Android device from your App store, and connect instantly using the Clevertouch code on the screen.



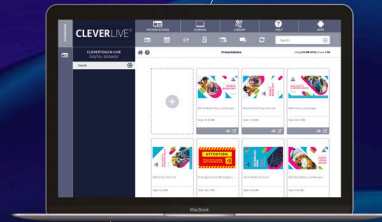
**LYNX<sup>®</sup> whiteboard**

LYNX Whiteboard is a free-to-use lesson building app, enabling student collaboration. The most dynamic, intuitive user experience of any whiteboard.





MDM stands for Mobile Device Management. We have partnered with leading MDM specialists, Radix Technologies, to consolidate all of your organisation's displays into one management system. Link your entire Clevertouch fleet to your MDM account for control anywhere.



CleverLive is a feature rich digital signage platform enabling you to integrate and control communications across all your Clevertouch devices from a single dashboard. Create, manage and broadcast to one or multiple displays, in any number of locations across the globe simultaneously.

## Key Features



Our patented Super Glide Touch technology offers the most fluid writing experience



Never run out of space with our infinite whiteboard



Huge connectivity including one of the latest USB-C ports with charging ability



Clevershare screen mirroring allows you to share images, video and audio



Connect your Cloud accounts to work from anywhere



8GB RAM  
64GB ROM



X5 is powered by  
Android 14



Remote management MDM



2 x high powered 20W speakers for crystal-clear sound quality



LYNX Whiteboarding made easy with a huge selection of pen & art tools to use



Cyber Essentials compliant



# Clevertouch X5 Specifications

## Display Panel

Diagonal Size	65" 4K   75" 4K   86" 4K
Screen Type	TFT LCD module with DLED backlight
Aspect Ratio	16:9
Display Colours	1.07 Billion (10 bit)
DC dimming (for Flicker Free)	Yes
Resolution	3840x2160 FHD-4K@60Hz
Landscape / Portrait	Landscape
Response Time	6.5ms
Refresh Rate	60Hz
LCD Viewing Angle	H = 178, V = 178 (Typ.)
Brightness	400 cd
Contrast Ratio	65" 3000:1 75" 3000:1 86" 3000:1
Dynamic Contrast Ratio	65" 5000:1 75" 5000:1 86" 5000:1
Glass Hardness	Tempered Glass - Mohs Level 7
Glass Thickness	3mm
Cover Glass	G1S
Cover Glass - Light Transmission	88%
Operating Hours	7*16h
NTSC	72%
Life of Screen	50,000 Hours
Light Sensor	Yes
Anti-reflection	Yes
Anti-glare	Yes
Blue Light Filter	Yes

## Interactivity

Touch Solution	High Precision IR Technology
Continuous Touch Points	40
Touch Resolution	32768x32768px
Touch Accuracy	±1mm for 90% of screen area and ±2mm around 10% of the edges
Minimum Touch Objective	3mm
Writing Height	2mm
Bonding	Zero Bonding
Touch Tool	Finger, passive pen, opaque objects
Simultaneous Writing	Yes
Ink In Tools	Yes - LYNX
Pen Type	Dual Recognition Stylus
Pen Holder	Integrated magnetic pen holders
Pen Tip Diameter	3mm/7mm
Pen & Touch Differentiation	Yes
Pen Identities	2
Palm Rejection	Yes
Annotation Over Any Source	Yes
Classroom Essential Apps	Includes Whiteboard, Annotate, Timer, Media Players, Browser, PDF Reader, Screen Record, Spinner, Voting, Maths Tools
Compatibility*	Windows 10, Linux, Mac, Android, Chrome

Tracking Rate	≥1m/s
Scan Rate	≥100Hz
Gestures & Edge Swipes	Windows Supported, OSX with additional Driver

## Connectivity

OPS Slot	Intel Spec 80Pin
HDMI In	3 x HDMI 2.0, (1 x front, 2 x rear)
HDMI OUT (Clone content from one display to another)	1
USB Touch (type B)	1 x Front USB Type B 2.0 (USB Touch) 2 x Side USB Type B 2.0 (USB Touch)
USB-A 2.0	2 (1 x rear, 1 x android only)
USB-A 3.0	3 x (2 x front + 1 x rear)
USB Type C (with video, audio, touch & network)	1 x front USB-C with support for video, audio, touch, network, and 65W charging 1 x side USB-C with support for video, audio, touch, and network
Display Port In	1
VGA In	1
LAN In (RJ45)	1 (Speed: 10/100Mbps)
LAN Out (RJ45)	1 (Speed: 10/100Mbps)
RS-232	1
Wake-on-LAN	Yes
Wireless Adapter (Clevertouch WiFi Module + Bluetooth)	Yes
Audio In	Yes - 5.2
Optical Out	1 (3.5mm)
Headphone	1 (3.5mm)
SPDIF	1
TF Card Slot	1
NFC Reader/Writer	Optional Extra
Camera	Optional Extra
WiFi	802.11ac, 802.11n, 802.11g, 802.11b, 802.11a, 802.11ax
WiFi Generation	WiFi 6E
WiFi Speed	Capable of speeds up to 1Gbps

## Computing

Operating System	Android 14 (EDLA Certified)
System Version	Lux
RAM	14
Internal Storage	8GB
Total Storage	64GB
Type	576GB (Expandable)
CPU	eMMC
SoC	ARM Cortex-A73*4
GPU	MT9679
Android Resolution	Mali G52MC1
Integrated Lux UI	4K
System Architecture	Yes
Google Certification	64-bit EDLA Certified (Enterprise Device Licence Agreement)
Access to Google Playstore Apps	Yes (certified)
Access to Microsoft Apps	Yes (certified)
Access to Google Cloud Services	Yes (certified)

# Clevertouch X5 Specifications

## Audio

Speaker Capacity	2x20W
Audio Out	Yes
SPDIF / Fibre	Yes
Sound Channel	2

## Power

Power Adapter	100-240VAC +/- 10% Wide Range
Power Requirements	65" 100-240V~50/60Hz 4.0A 75" 100-240V~50/60Hz 4.0A 86" 100-240V~50/60Hz 4.5A 65"
Power Consumption (Normal)	104.88W 75" 135.34W 86" 137.68W
Power Consumption (Standby)	≤0.5W
Ultra Quiet Fanless Design	Yes

## Operating & Storage Environment

Operating Temperature	0° to 40°
Storage Temperature	-20° to 60°
Operating Humidity	10% to 90% RH
Storage Humidity	10% to 90% RH
Altitude	Below 5000 metres

## X5 Built-In Features

BYOM	Yes
LYNX™ App With Online Lesson Planning	Yes
Handwriting Recognition	Yes – Lynx Pro
Ecosystem of Extensive Apps (with Secure and Fast Download)	Yes
Open SDK Support	Yes
Intelligent O&M	Yes
H.264 + H.265	Yes
HD Hardware Encoding and Decoding	Yes
CleverLive Store App for Education	Yes
CleverLive™ Embedded Digital Signage	Yes
Clevershare™ Mirroring Any Device To The Board	Free for the life of the screen (touch back)
MiraCast (WiFi Direct)	Yes
AirPlay	Yes
ChromeCast	Yes
Cloud Account Access	OneDrive, Google Drive, Lynx Cloud
CleverLive™ Rooms Embedded Room Booking	Yes
CleverLauncher™ Customisable Welcome Page (with option to integrate logo, clocks, apps and more)	OneDrive, Google Drive, Lynx Cloud
LynxCloud™	Yes
Whiteboard Annotation	Yes
Scan QR Code For Saving Work	Yes
Alerts and Announcements	Yes
Over-the-air Updates	Yes
Remote Management Of Touchscreens (MDM)	Yes - One year license

## Physical Spec

Panel Dimensions	65" 1491×898×87mm 75" 1712×1022×87mm 86" 1957×1159.9×97.4mm
Packed Dimensions	65" 1628×185×1005mm 75" 1863×225×1148mm 86" 2110×225×1291mm
Net Weight	65" 36.15kg 75" 49.15kg 86" 53.55kg
Packed Weight	65" 41.70kg 86" 63.75kg 75" 56.60kg
VESA Mount Point	65" 600 x 400mm 75" 800 x 400mm 86" 800 x 600mm
Screws for VESA	M8 x 25mm

## Inside your Clevertouch Box

What's In The Box	(1) Clevertouch X5 (1) 3M Length HDMI Cable (1) 5M Length USB cable (A-B) (1) 1.5M USB-C Cable (1) 3M Regional Power Cable (2) Batteries for Remote Control (1) Remote Control (2) Dual Recognition Stylus (1) User Guide (1) Quick Install Guide (1) Clevertouch WiFi Module
-------------------	---

## Warranty

Warranty term and upgrade options vary by region. Contact your local reseller or distributor for information and visit [clevertouch.com/about/warranty](http://clevertouch.com/about/warranty)

## Compliance & Certification

Regulatory Certification	CE, FCC, UL, Energy Star & EEC
--------------------------	--------------------------------

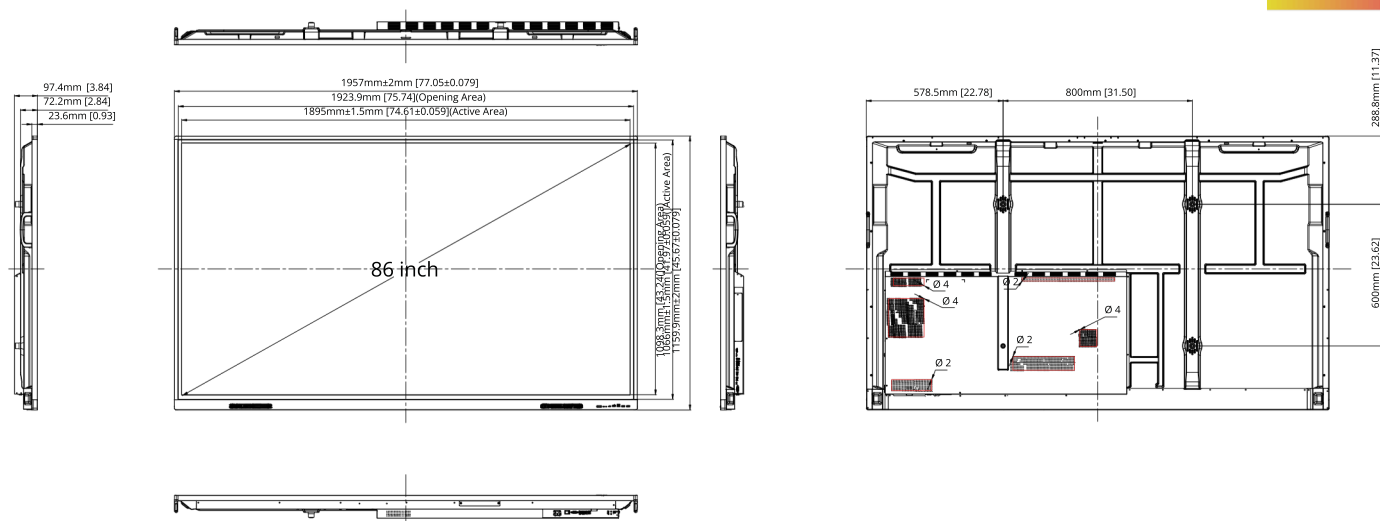


## Statement

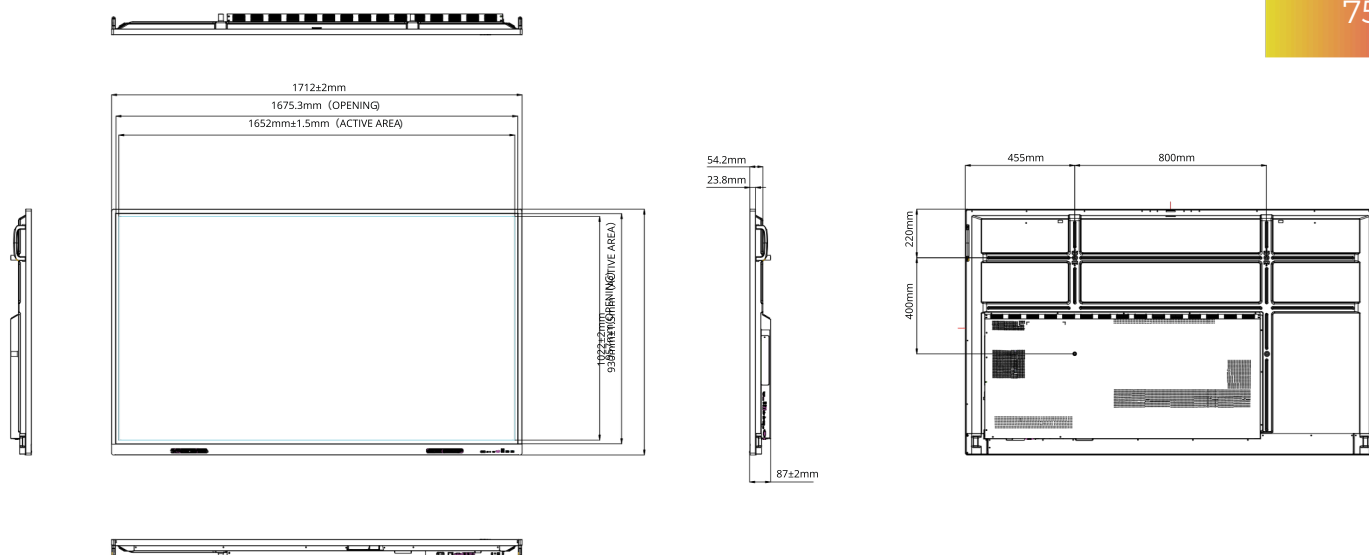
Size and weight vary by configuration and manufacturing process, please refer to the actual product. The product images are for illustrative purposes only and may slightly differ in appearance, colour, size, etc. from the actual product. The description, illustrations, etc. on this document may be subject to change in accordance with the latest product specification and performance. Should the above-mentioned change in the document become necessary, the document may be updated without written notice.

© 2021 Clevertouch. All rights reserved. Sahara Presentations Systems PLC, is part of the Boxlight group of companies, and the owner of trademarks in several global jurisdictions including but not limited to Clevertouch, the Clevertouch logo, UX Pro, IMPACT™, IMPACT Plus™, Impact MAX, CleverLive, LUX, Lynx, CleverMessage, CleverLive Store and Clevershare. All third-party trademarks (including logos and icons) referenced by Clevertouch remain the property of their respective owners. Unless specifically identified as such, Clevertouch's use of third-party trademarks does not indicate any relationship, sponsorship, or endorsement between Clevertouch and the owners of these trademarks. Applicable Terms and Conditions for warranty and support available at [clevertouch.com/about/warranty](http://clevertouch.com/about/warranty). All weights and dimensions are approximate. Product specifications are subject to change without notice. [Clevertouch.com](http://Clevertouch.com).

86"



75"



65"

