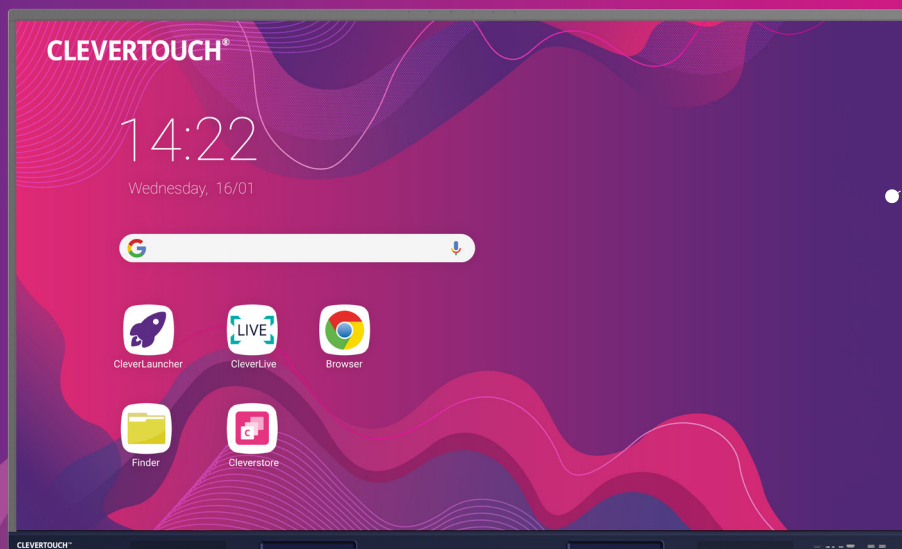


## IMPACT Max 2

Maximum security. Maximum potential. Maximum results.

Delivering a truly intuitive and collaborative experience, IMPACT Max 2 is an interactive screen with unlimited possibilities. Combines high-quality design, functionality, durability, native screen sharing and 4K resolution.

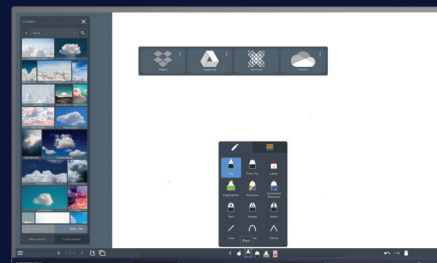
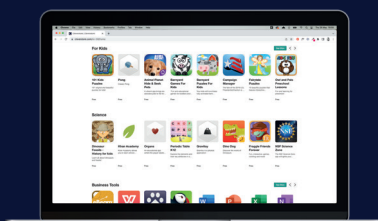


**Quick Launch Menu for instant teaching tools**  
Your most commonly used apps are available with one touch and are easily accessible via the Quick Launch Menu.

Available in a range of sizes  
65" | 75" | 86"

Software included at no extra cost

**CLEVER<sup>®</sup> LIVE** **CLEVERSHARE<sup>®</sup>** **CLEVERMDM<sup>®</sup>**

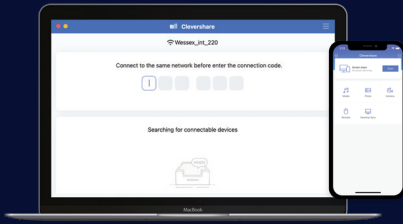


**CLEVERSTORE<sup>®</sup>**

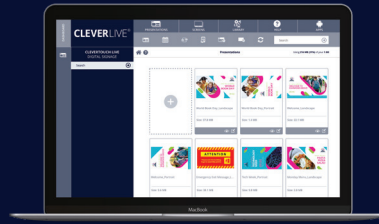
Choose from hundreds of apps at no extra cost. Cleverstore has apps in multiple languages and for all age groups and subjects. No adverts, no in-app purchases, no hassle.

**LYNX**  
whiteboard

LYNX Whiteboard is a free-to-use lesson building app, enabling student collaboration. The most dynamic, intuitive user experience of any whiteboard



Any device can download the CleverShare app and connect instantly by typing in the code on the Clevertouch screen. CleverShare App is free to download and compatible with Android, Windows, iOS, and Chrome devices.



CleverLive is a feature rich digital signage platform enabling you to integrate and control communications across all your Clevertouch devices from a single dashboard. Create, manage and broadcast to one or multiple displays, in any number of locations across the globe simultaneously.

## Key Features



Designed for blended learning



LYNX Whiteboard lesson creation app



Cleverstore free app store



CleverShare screen mirroring



Remote management MDM



Customise your home screen



Full digital signage capabilities



Compatible with Google Classroom and Microsoft 365



Connect your Cloud accounts to work from anywhere



Built-in array microphone - all lessons can be recorded with sound



Latest generation USB-C with charging and hardware optimization



2x 20W speakers for room-filling sound + 16W Subwoofer



IMPACT Max 2 is an Award-Winning Clevertouch Interactive Display.

# IMPACT Max 2 Specifications

## Display

Diagonal Size	65" 4K, 75" 4K, 86" 4K
<b>NEW</b> Screen Type	VA - Direct LED Backlight
Aspect Ratio	16:9
Display Colours	1.07 Billion (10 bit)
Resolution	4K UHD (3840 x 2160 @60Hz)
Response Time	5ms
Refresh Rate	60Hz
LCD Viewing Angle	178°
Brightness	450 cd/m2
Contrast Ratio	65", 75", 86" - 5000:1
Dynamic Contrast Ratio	65", 75", 86" - 10000:1
DC Dimming (for Flicker Free)	Yes
Glass Hardness	Tempered Glass - Mohs Level 7
Glass Thickness	3mm
Glass Type	- Low Parallax 0mm Air Gap - Heat tempered - Anti Glare & Anti smudge for durability - Super Glide Surface
<b>NEW</b> Antibacterial Power Button	Yes
Main Board	RK3583
Life of Screen	50,000 Hours
NTSC	65", 75", 86" - 72%

## Interactivity

Writing Technology	High Precision IR Technology
<b>NEW</b> Continuous Touch Points	40
Touch Resolution	32768x32768px
<b>NEW</b> Response Time	≤2.5ms
Touch Accuracy	±1mm
<b>NEW</b> Minimum Object Size	2mm
Touch Tool	Finger, passive pen, opaque objects
Simultaneous Writing	Yes
Ink In Tools	Yes - Lynx
Pens Included	2
<b>NEW</b> Pen Type	Dual Recognition Super Cool Stylus
Pen Holder	Integrated magnetic pen holders
Pen Tip Diameter	3mm/7mm
Pen & Touch Differentiation	Yes
Pen Identities	2
Palm Rejection	Yes
Annotation Over Any Source	Yes
Classroom Essential Apps	Includes Whiteboard, Annotate, Timer, Media Players, Browser, PDF Reader, Screen Record, Spinner, Voting, Maths Tools
Compatibility	Windows 11, Linux, Mac, Android, Chrome
Tracking Rate	≥1m/s
<b>NEW</b> Scan Rate	400Hz
Gestures & Edge Swipes	Windows Supported, OSX With additional Driver

## Connectivity

OPS Slot	1 - Intel Spec 80Pin
HDMI In	3 (2.0)
HDMI Out	1
USB-A 2.0	1
USB Touch (type B)	2
USB A 3.0 (Faster Data Transfer)	4
<b>NEW</b> USB C (Video, Audio & Touch)	2 (Front supports 100W charging)
USB C Out	1
LAN In (RJ45)	1
LAN Out (RJ45)	1
RS-232	1
Wake-on-Lan	Yes
Wireless Adapter 2.0 + WAP	Yes
Clevertouch WiFi Module	Yes
Bluetooth	Yes 5.0
<b>NEW</b> Displayport In	1
Audio In	1
Optical Out	1
Headphone	1 (3.5mm)
Total touch out ports	2
Camera	Optional Extra
Array Mic	6
WiFi	802.11ac, 802.11n, 802.11g, 802.11b, 802.11a, 802.11ax
WiFi Speed	Capable of speeds up to 433Mbps

## Computing

<b>NEW</b> Operating System	Android 13
<b>NEW</b> System Version	LUX 13
RAM	8GB
Internal Storage	64GB
CPU	A76*2+A55*4
GPU	G610MC2
Android Resolution	4K
<b>NEW</b> System Architecture	64-bit
Integrated LUX UI	Yes
Google EDLA Via LUX Mini	Optional

## Audio

Dual Front Facing, Bass Enhanced Speakers	2 x 20W
Subwoofer	20W
Combined Sound	60W
Audio Out	Yes
SPDIF / Fibre	Yes
Sound Channel	2.1
<b>NEW</b> Super Wide Sound	Yes

# IMPACT Max 2 Specifications

## Power

Power Requirements	65"	100-240V~ 50/60Hz 4.0A
	75"	100-240V~ 50/60Hz 5.0A
	86"	100-240V~ 50/60Hz 6.0A
Power Consumption (Normal)	65"	175W
	75"	220W
	86"	280W
Power Consumption (Standby)		≤0.5W
Ultra Quiet Fanless Design		Yes

## Operating & Storage Environment

Operating Temperature	0° to 40°
Storage Temperature	-20° to 60°
Operating Humidity	10% to 90% RH
Storage Humidity	10% to 90% RH
Altitude	Below 5000 metres

## Physical Spec

Panel Dimensions	65"	1489x87x906mm
	75"	1709x87x1029mm
	86"	1957x100x1169mm
Packed Dimensions	65"	1628x185x1005mm
	75"	1863x225x1155mm
	86"	2110x225x1304mm
Net Weight	65"	36.65kg
	75"	50.15kg
	86"	60.60kg
Packed Weight	65"	46.35kg
	75"	61.70kg
	86"	73.75kg
VESA Mount Point	65"	600x400mm
	75"	800x400mm
	86"	800x400mm

## Software & Built In Features

LYNX™ App With Online Lesson Planning	Yes
LYNX™ Whiteboard	Yes
Handwriting Recognition	Yes - LYNX Pro
Unlimited Multi-Floating Resizable Windows	Yes
Split Screen Support	Yes
Ecosystem of Extensive Apps with Secure and Fast Download	Yes
OpenSDK Support	Yes
Secure System Environment	Yes
Intelligent O&M	Yes
H.264 + H.265	Yes
HD Hardware Encoding and Decoding	Yes
Cleverstore™ App Store For Education	Yes
CleverLive™ Embedded Digital Signage	Yes

Clevershare™ Mirroring Any Device To The Board	Free for the life of the screen (touch back)
Miracast (WiFi Direct)	Yes
AirPlay	Yes
Chromecast	Yes
Integrated Personalised	Yes
Accounts Profiles	Yes
Cloud Account Access	OneDrive, Google Drive, LYNX Cloud
CleverLive Rooms™ Embedded Room Booking	Yes
Customizable Welcome Page with option to integrate logo, clocks apps and more (CleverLauncher™)	Yes
LynxCloud™	Yes
Whiteboard Annotation	Yes
Scan QR Code For Saving Work	Yes
Alerts and Announcements	Yes
Over-the-Air Updates	Yes
Remote Management Of Touchscreens (MDM)	Yes - One year license

## Access to

Pre sales team	Yes
Service and Support In-Country Teams	Yes
CleverAcademy Self Paced Training	Yes
In-person or Virtual Training Sessions	Yes
LYNX Lesson Library for Pre Created Lesson Content	Yes

## Inside your Clevertouch Box

What's In The Box	<ul style="list-style-type: none"> <li>(1) Clevertouch IMPACT Max 2</li> <li>(1) 1.5M Length HDMI Cable</li> <li>(1) 3M Length USB cable (A-B)</li> <li>(1) 1.5M USB-C Cable</li> <li>(1) 3M Regional Power Cable</li> <li>(1) Remote Control</li> <li>(2) Batteries for Remote Control</li> <li>(2) Dual Recognition Stylus</li> <li>(1) User Guide</li> <li>(1) Quick Install Guide</li> <li>(1) Clevertouch WiFi Module</li> </ul>
-------------------	---

## Warranty

Warranty term and upgrade options vary by region. Contact your local reseller or distributor for information and visit [clevertouch.com/about/warranty](http://clevertouch.com/about/warranty)

## Compliance & Certification

Regulatory Certification	CE, FCC, UL, Energy Star & EEC
--------------------------	--------------------------------



# IMPACT Max 2 Specifications

## Support

For all Clevertouch products, visit: [support.clevertouch.com](https://support.clevertouch.com)

## Statement

Size and weight vary by configuration and manufacturing process, please refer to the actual product. The product images are for illustrative purposes only and may slightly differ in appearance, colour, size, etc. from the actual product. The description, illustrations, etc. in this document may subject to change in accordance with the latest product specification and performance. Should the above-mentioned change in the document become necessary, the document may be updated without written notice.