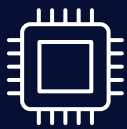


Clevertouch OPS i7

Explore the new way of meeting with the flexible, versatile and cost-effective Clevertouch OPS i7. Convert your interactive display into a big-screen all-in-one touch PC for a feature rich experience.



Key Features



12th Generation "Comet Lake"
Processor



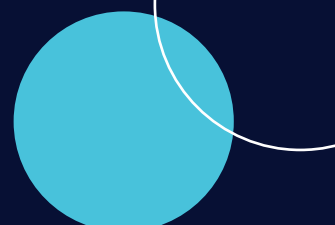
8 to 16GB DDR4 2400MHz
RAM



1 x M.2 256GB SSD



Supports up to 4K video
resolution



Clevertouch OPS i7 Specifications

CPU

Processor	Intel® Core™ i7 1260P 12 Core (16 Thread), 2.1Ghz (4.7Ghz Turbo), 18MB Cache
------------------	---

Memory

Type	Dual channel DDR4 3200MHz
Memory	260-Pin DDR4 SODIMM
Max Size	32GB

Graphics

Intel® Iris® Xe Graphics/Intel® UHD Graphics for 12th Gen Intel® Processors

Storage

SSD	1x M.2-2280 SATAIII (up to 6Gb/s) SSD PCIe3.0x4 (up to 32Gb/s) (optional) SATA: 128GB/256GB/512GB (optional) NVMe: 256GB/512GB (optional)
HDD	1x 2.5'HDD SATAIII (up to 6Gb/s) 1TB optional

Interface

USB	4x USB3.0 1x USB Type-C
Audio	1x MIC in (Pink) 1x Line Out (Green)
Ethernet	1x 1xRJ45 (10/100/1000M)
HDMI	1x HDMI 2.0 (Max resolution 3840 x 2160@60Hz)
DP	x DP (Max resolution 7680 x 4320@60Hz)
HDD_LED	1x HDD LED (Running: green LED blinking)
POWER_LED	1x Power LED (Running: red LED)
Antenna	2x 2.4G/5G Dual frequency antenna
Power Button	1x Power Button
Others	1x OS reset

Expansion

WLAN	1x M.2 2230 (802.11a/b/g/n/ac/ax 2T2R +BT5.2) Max Speed: 1201Mbps
-------------	--

80Pin

HDMI	1x HDMI2.0 (Max resolution 3840 x 2160@60Hz)
-------------	--

OPS Interface

DP	DP 1x DP (Max resolution 7680 x 4320@60Hz)
USB	1x USB3.0 3x USB2.0
DC Power	12-19V DC

Operation System

Windows 10/11 64bit

Power

Power Supply Mode	80Pin OPS interface power supply
Input Power	12V~19V
Max Power Consumption	80.7W
Stanby Power Consumption	2.9W

Environmental

Operation Temperature	-10°C ~ 45°C
Operation Humidity	10% ~ 90% RH
Storage Temperature	-20°C ~ 60% RH
Storage Humidity	10% ~ 90% RH

Physical Specifications

Dimensions (hardware)	180 x 119 x 30mm
Net Weight	0.6kg
Gross Weight	1PCS 0.97kg 10PCS 10.56kg

Dimensions

